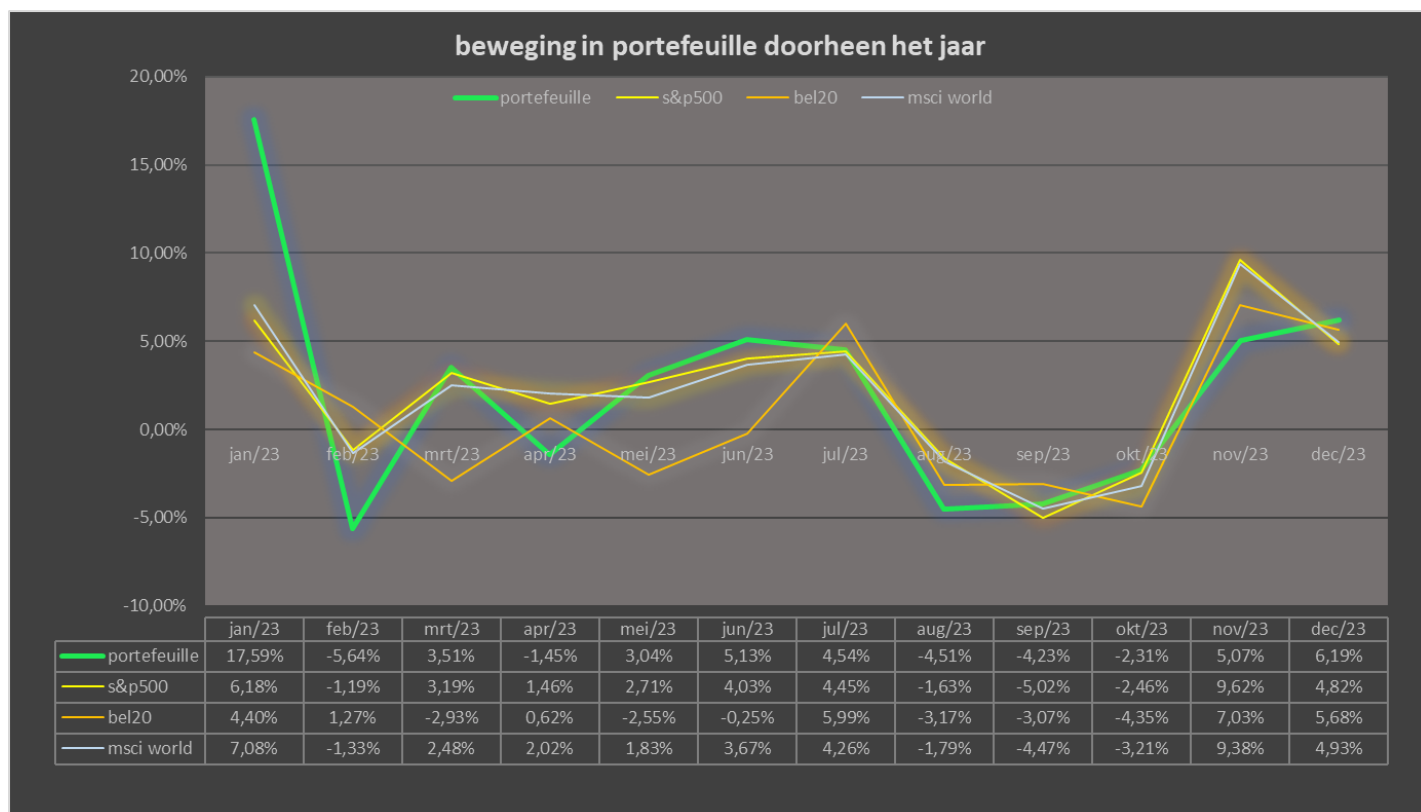
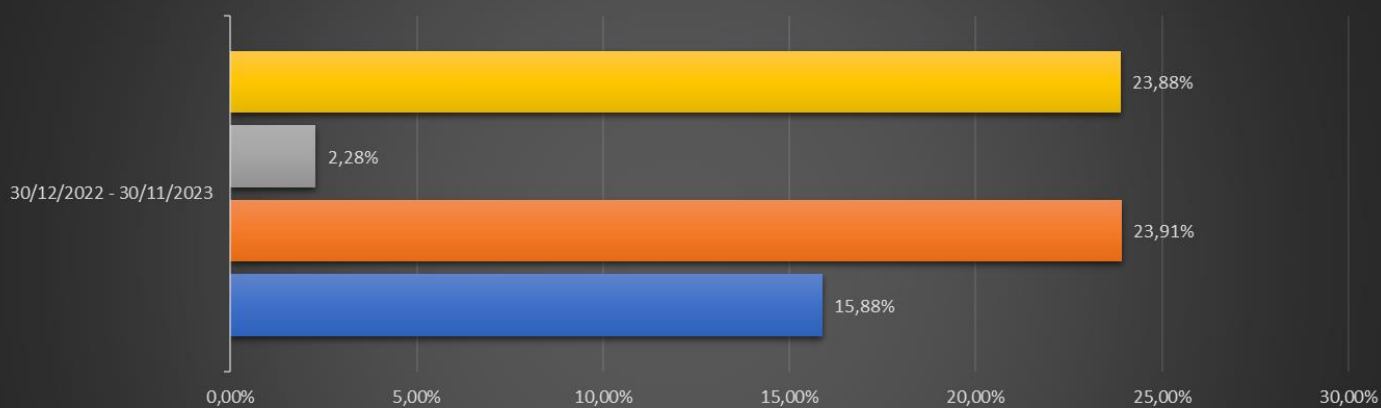


PORTEFEUILLE-UPDATE 31.12.2023 – RENDEMENT

	portefeuille	s&p500	bel20	msci world
jan/23	17,59%	6,18%	4,40%	7,08%
feb/23	-5,64%	-1,19%	1,27%	-1,33%
mrt/23	3,51%	3,19%	-2,93%	2,48%
apr/23	-1,45%	1,46%	0,62%	2,02%
mei/23	3,04%	2,71%	-2,55%	1,83%
jun/23	5,13%	4,03%	-0,25%	3,67%
jul/23	4,54%	4,45%	5,99%	4,26%
aug/23	-4,51%	-1,63%	-3,17%	-1,79%
sep/23	-4,23%	-5,02%	-3,07%	-4,47%
okt/23	-2,31%	-2,46%	-4,35%	-3,21%
nov/23	5,07%	9,62%	7,03%	9,38%
dec/23	6,19%	4,82%	5,68%	4,93%
	portefeuille	s&p500	bel20	msci world
31/12/2022 - 31/12/2023	15,88%	23,91%	2,28%	23,88%

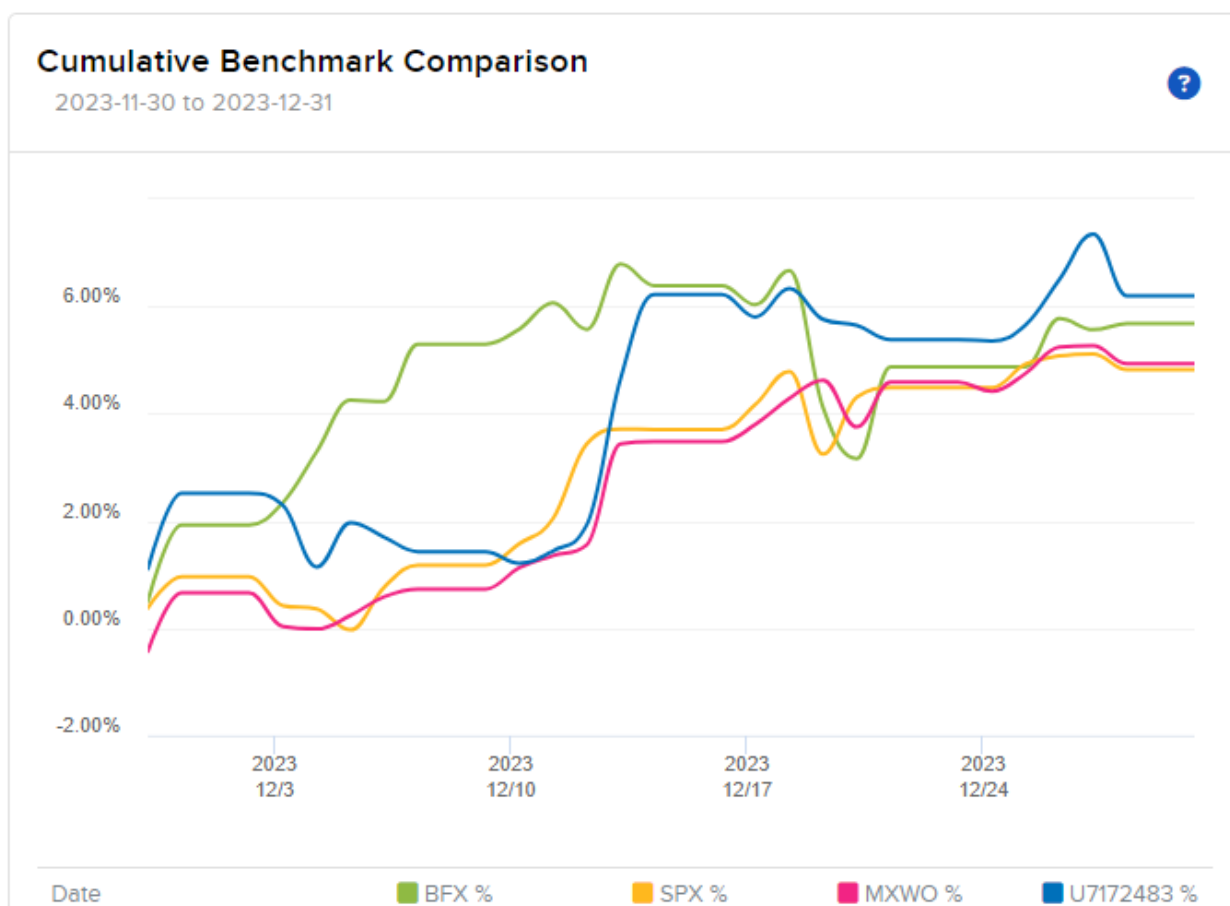


vergelijking rendement ytd met de indexen



	30/12/2022 - 30/11/2023
msci world	23,88%
bel20	2,28%
s&p500	23,91%
portefeuille	15,88%

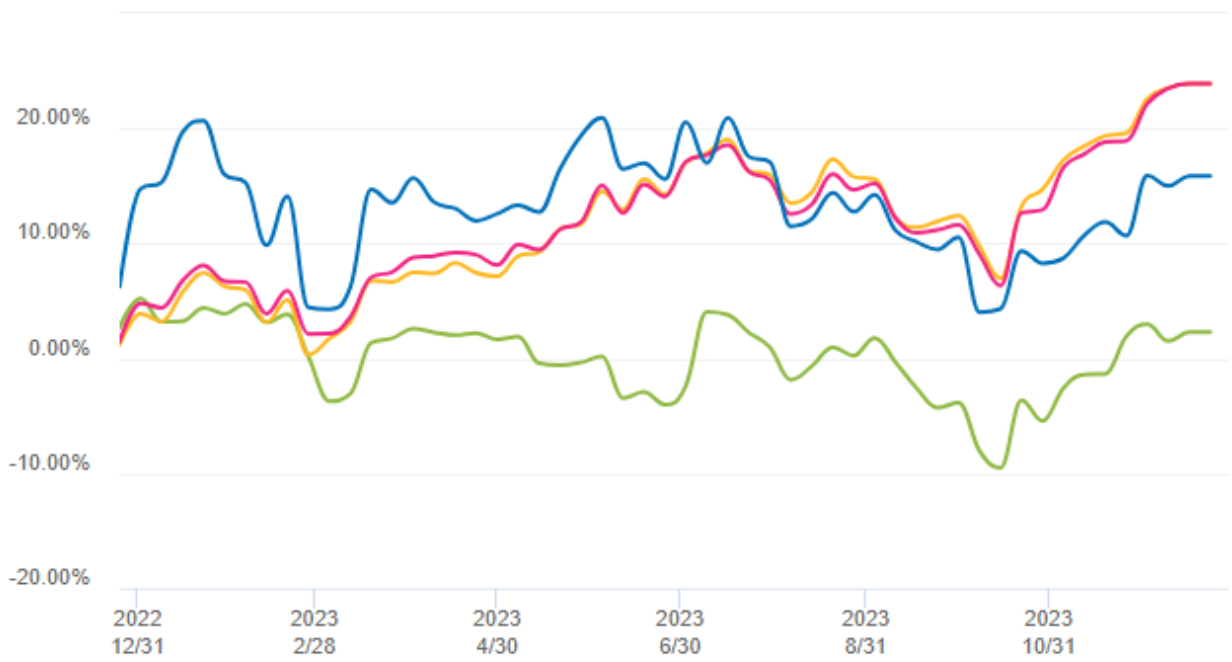
YTD- grafiek, aangeleverd door de broker (LYNX).



De maandgrafiek maand december 2023, aangeleverd door de broker (Lynx) (tot en met 31/12/2023)

Cumulative Benchmark Comparison

2022-12-30 to 2023-12-31



Date

BFX %

SPX %

MXWO %

U7172483 %